



# QNX und fli4l

---

meinen router :

PC2  
192.168.6.1  
lan.fli4l

---

## Installation DHCP (www.fli4l.de) in fli4l-2.0.X\config

```
#-----
# Optional package: DHCP server
#-----
OPT_DHCP='yes' # install DHCP server: yes or no
DHCP_LS_TIME_DYN='3600' # default time for dynamic leases: 1 hour
DHCP_MAX_LS_TIME_DYN='7200' # max time for dynamic leases: 2 hours
DHCP_LS_TIME_FIX='86400' # default time for fix leases: 1 day
DHCP_MAX_LS_TIME_FIX='604800' # max time for fix leases: 1 week
DHCP_RANGE_1='192.168.6.2 192.168.6.100' # range of n'th ethernet, see
ETH_N !
DHCP_WINSERVER_1='' # ip-adress of 1st external wins-server (use
only, if OPT_NMBD='no' !)
DHCP_WINSERVER_2='' # ip-adress of 2nd external wins-server (use
only, if OPT_NMBD='no' !)

#-----
-----
# Optional package: DHCP client
#-----
-----
OPT_DHCLIENT='no' # install DHCP client: yes or no
DHCLIENT_INTERFACES='eth1' # listen on interfaces, e.g. 2nd(!) NIC
DHCLIENT_USEPEERDNS='no' # use dns server of your provider: yes or no
```

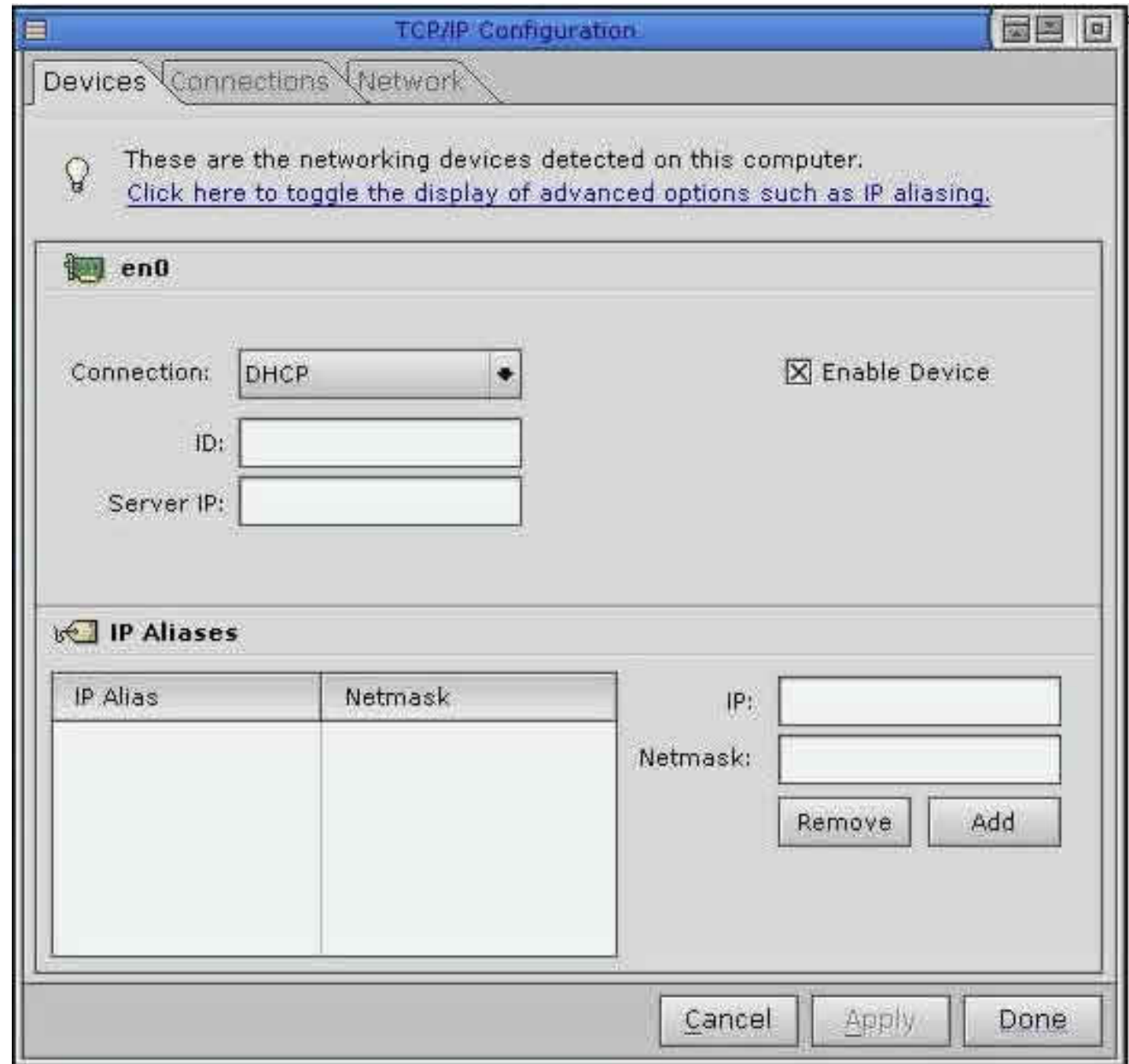
---

Neue fd machen mit mkfloppy.bat, und mit diesen den fli4l-router aufstarten.

---

Auf den QNX rechner machen sie folgendes : Sie Bilder!

## STEP 1



## STEP 2

The image shows a screenshot of the 'TCP/IP Configuration' dialog box. The window title is 'TCP/IP Configuration'. At the top, there are three tabs: 'Devices', 'Connections', and 'Network'. The 'Connections' tab is selected. Below the tabs, there is a lightbulb icon and a message: 'These are the modem, direct serial and PPPoE connections used to connect to a remote network. You may [Add New Entries](#) or [Remove the entry below](#).' Below this message is a section titled 'New Connection' with a computer icon. In this section, the 'Name' field contains 'New Connection', the 'Type' dropdown is set to 'Ethernet (PPoE)', and the 'Device' dropdown is set to 'en0'. There is an unchecked checkbox for 'Automatically Connect'. Below the 'New Connection' section is another section with three tabs: 'Network', 'Connection', and 'Logging'. The 'Network' tab is selected. In this section, the 'Login Type' dropdown is set to 'Automatic (PAP/CHAP)'. There are input fields for 'User Name', 'Password', 'Server', and 'Service'. To the right of these fields is a 'Name Servers' list box, which is currently empty. Below the list box is an 'IP:' input field and two buttons: 'Remove' and 'Add'. At the bottom of the 'Network' section is an unchecked checkbox for 'Always Use This Connection'. At the very bottom of the dialog box are three buttons: 'Cancel', 'Apply', and 'Done'.

Devices Connections Network

These are the modem, direct serial and PPPoE connections used to connect to a remote network. You may [Add New Entries](#) or [Remove the entry below](#).

**New Connection**

Name:  Type:

Automatically Connect Device:

Network Connection Logging

Login Type:

User Name:

Password:

Server:

Service:

Name Servers

IP:

Always Use This Connection

STEP 3

TCP/IP Configuration

Devices Connections **Network**

💡 These are the modem, direct serial and PPPoE connections used to connect to a remote network. You may [Add New Entries](#) or [Remove the entry below](#).

**New Connection**

Name:  Type:

Automatically Connect Device:

**Network** Connection **Logging**

Disconnect if idle for  minutes.

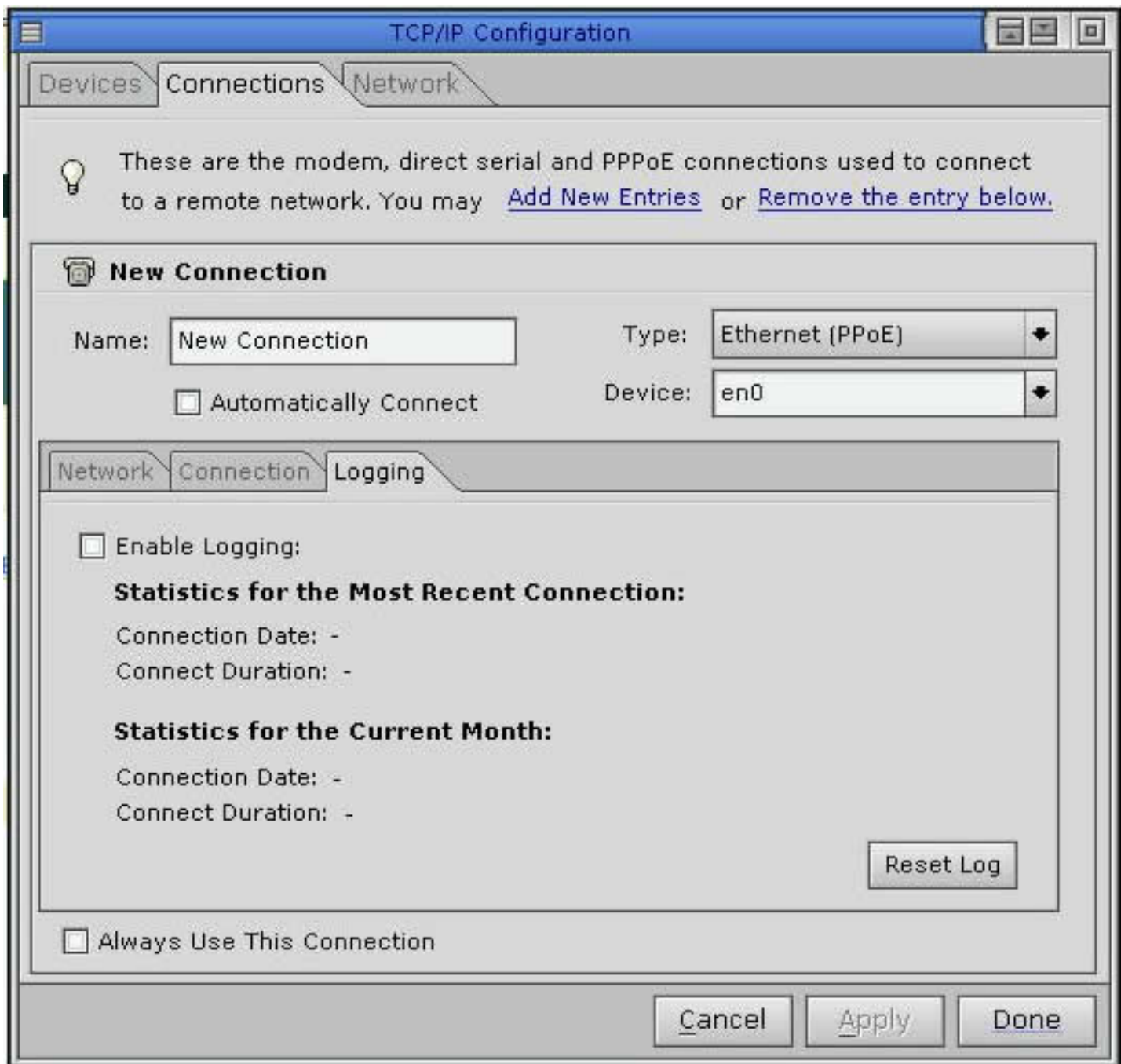
Re-establish connect upon failure:

Retry no more than  times.

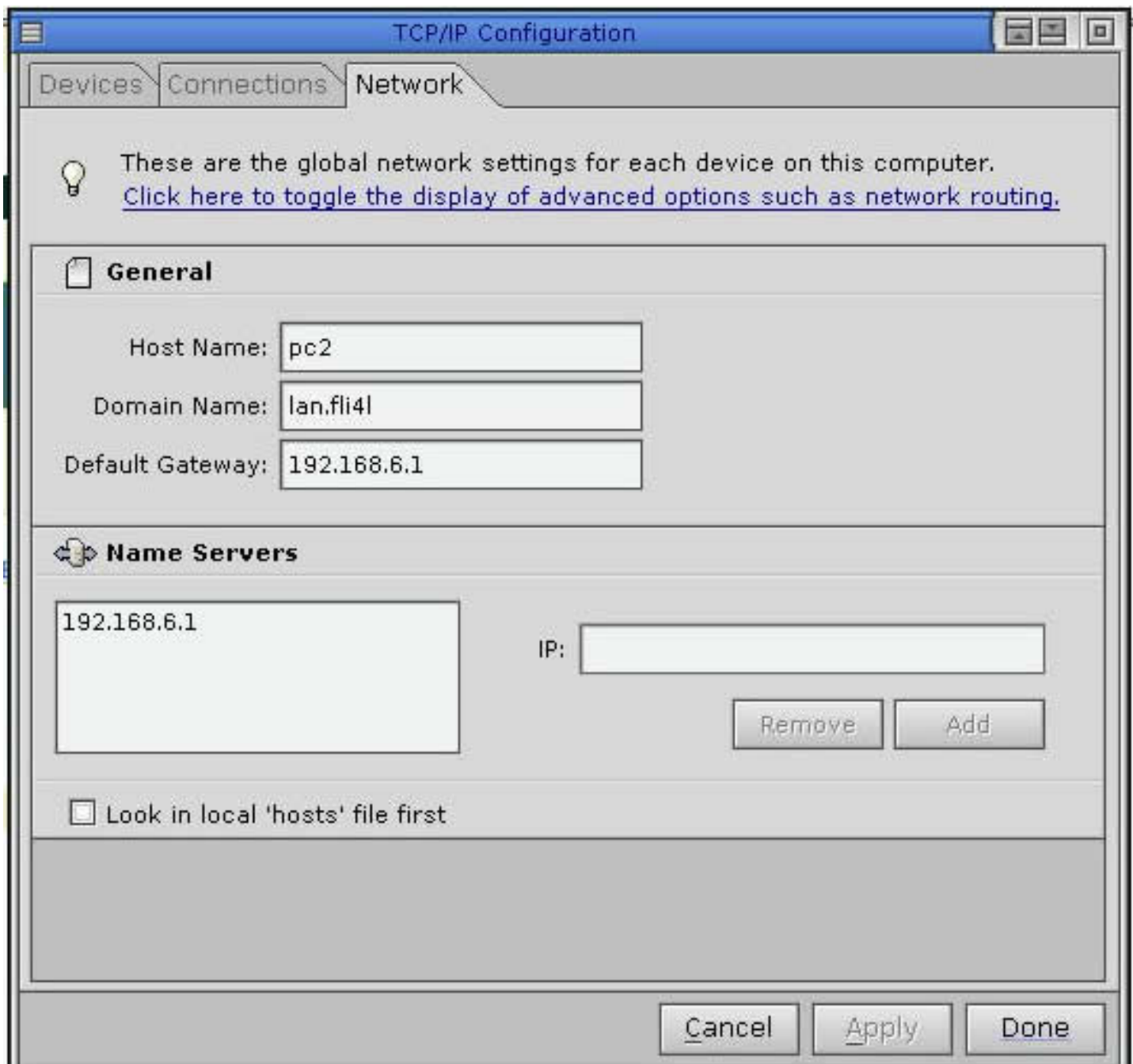
Between retries, wait for  seconds.

Always Use This Connection

STEP 4



STEP 5



Grusse, Guido Clauw (guido@clauw.com)(Belgien)

[Klicken Sie hier, um die Seite auszudrucken.](#)